



7B Pike Street,  
Liskeard,  
PL14 3JE  
£600 pcm



**Trowbridge's**  
ESTATE & LETTINGS





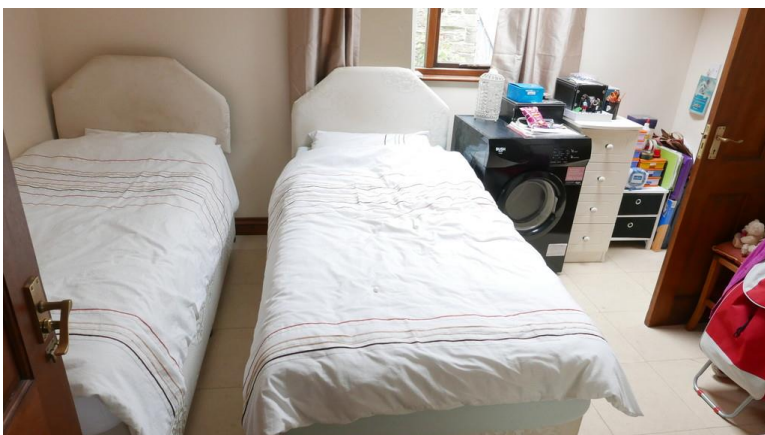


**ENTRANCE HALL**

7' x 5' (2.13m x 1.52m) Door with ornamental panel and double glazed windows offers access from a courtyard area to the entrance hall with two ceiling-mounted double glazed windows. Obscure glazed, double glazed door offers access to a small patio area, two wall-mounted up-lighters

**BEDROOM ONE**

11' x 10' (3.35m x 3.05m) From the entrance hall, door offers access to bedroom one. Side and rear aspect double glazed windows, tiled floor, TV aerial connection point, door offers access to walk-in wardrobe with hanging/shelf storage space, consumer unit, access to loft space, ceiling-mounted inset downlights



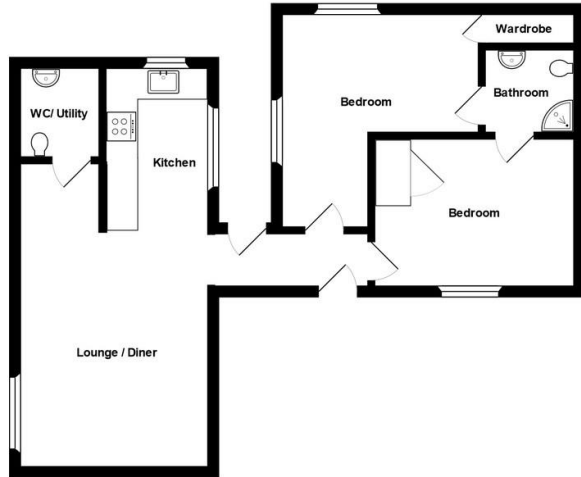
**JACK AND JILL SHOWER ROOM**

5' x 5' (1.52m x 1.52m) From bedroom one, door offers access to the Jack and Jill shower room. Low-level WC, pedestal wash hand basin with splashback tiles, wall-mounted mirror, ceiling-mounted downlights, shower cubicle with tiled walls and shower controls/attachments, wall-mounted mirror fronted medicine cabinet

**BEDROOM TWO**

12' x 9' (3.66m x 2.74m) From the entrance hall, door offers access to bedroom two. Double glazed front

7B Pike Street, Liskeard, Cornwall



All measurements are approximate and for display purposes only

aspect and Velux style windows, door offers access to built-in cupboard space, two wall-mounted up-lighters, door offers access to the Jack and Jill shower room

#### LOUNGE/DINING ROOM/KITCHEN

25' x 12' (7.62m x 3.66m) From the entrance hall, door offers access to the lounge/dining room/kitchen area. To the lounge, there is a wide sill, low-level obscure glazed, double glazed window, two further double glazed Velux style window, wood beams to ceiling, space for table/chairs to dining area, TV connection point, two further double glazed Velux style windows, flue to a self-contained biomass heater. To the kitchen area, matching low-level and eye-level units offering cupboard and drawer space, rear aspect and Velux style double glazed windows, Belfast style sink, work surface, wall-mounted gas boiler, wood beams to ceiling, space for cooker, cooker hood with fan and light over, under-unit downlights, space for fridge/freezer, tiled floor throughout, door offers access to cloakroom/utility room. Double glazed Velux style window, wall-mounted radiator, wash-hand basin, space/plumbing for washing machine, low-level WC, tiled floor

#### OUTSIDE AREA

To the front elevation, there is a courtyard area with slate floor and door to outbuilding with glazed window, fence to front boundary

AT PRESENT, THE PROPERTY IS UNDER A SHORT HOLD TENANCY

%epcGraph\_c\_1\_304%